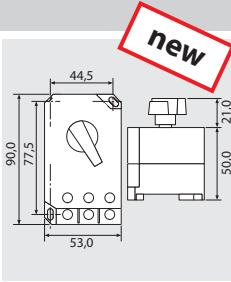


Motor Protection-Switches

Type OKN

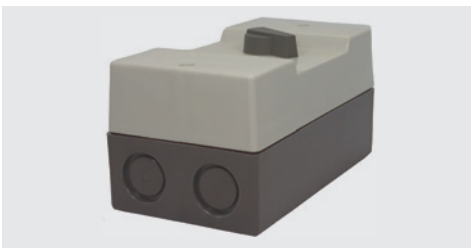


new

K F

R+M Nr.	working range
901 510	6,3 - 10,0 A
901 516	10,0 - 16,0 A
901 522	16,0 - 22,0 A
901 527	22,0 - 27,0 A

Electric Torch OKN



R+M Nr.	(M)
901 540	plastic

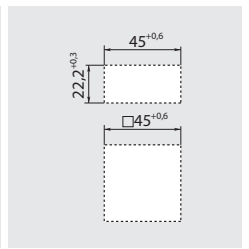
Time Hour Meters

Meter with Clip

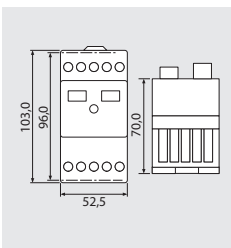


R+M Nr.	(V)
915 102 4	24 V ~
915 122 0	230 V ~

Cutout

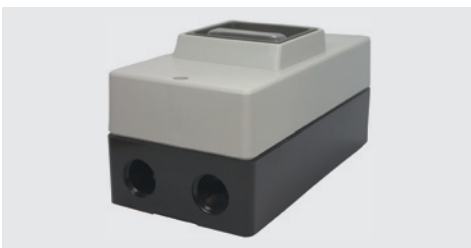


Type OKE 2



R+M Nr.	working range
901 610	6,3 - 10,0 A
901 616	10,0 - 16,0 A
901 625	16,0 - 25,0 A

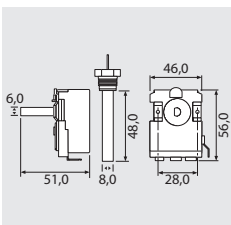
Electric Torch OKE B



R+M Nr.	(M)
901 630	plastic

Remote Thermostats

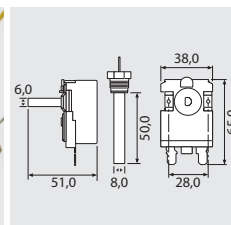
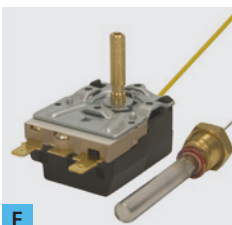
Emerson 8654



W

3/8" M. Contact 16 A - 380 V (AC1)

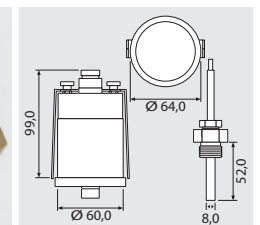
Emerson 1536



F

M14 x 1 M. Contact 16 A - 380 V (AC1)

With Contact Probe and Adjustable Knob



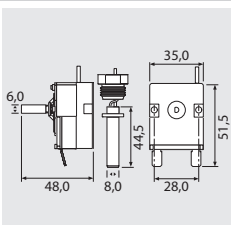
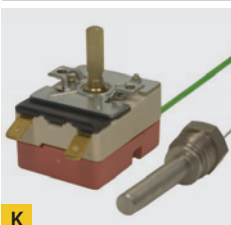
1/2" M. Contact 5 A - 250 V (AC1). Indication of temperature 0 - 120 °C

R+M Nr.	working range	tube length
910 15	30 - 150 °C	1550 mm

R+M Nr.	working range	tube length
910 16	0 - 160 °C	1550 mm

R+M Nr.	working range	tube length
910 20	0 - 80 °C	1000 mm

Probe with Screw

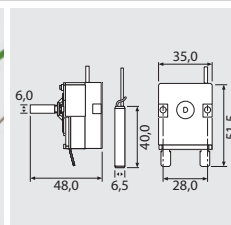
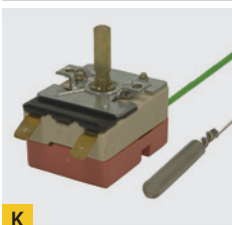


K

3/8" M. Contact 16 A - 380 V (AC1)

R+M Nr.	working range	tube length
910 12	30 - 150 °C	1520 mm
910 13	0 - 152 °C	920 mm

Probe without Screw



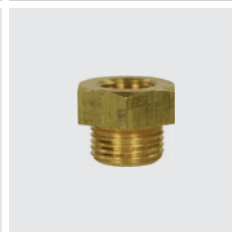
K

Contact 16 A - 380 V (AC1)

R+M Nr.	working range	tube length
910 11	4 - 155 °C	1210 mm
910 14 *	31 - 160 °C	920 mm

* phase-out model

Reduction Nipples



3/8" F - 1/2" M

R+M Nr.
910 102

Symbols (M) Material (V) Voltage