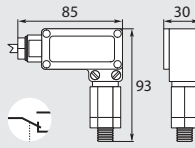


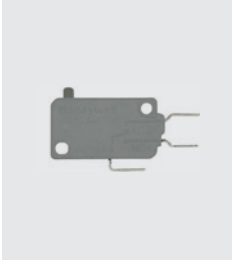
Pressure Switches

R+M



Contact 15 A - 250 V (AC1). Cable 1200 mm.
Max. 250 bar / 90 °C

Spare Parts for R+M Pressure Switches



Microswitch

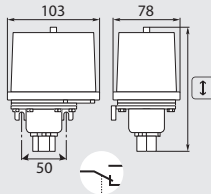


Seal kit

R+M Nr.	Thread	start-up P
912 10	1/4" M	40 bar
912 20	1/4" M	25 bar
912 101	3/8" M	40 bar

R+M Nr.	R+M Nr.
912 00	912 09

Condor / Fanal

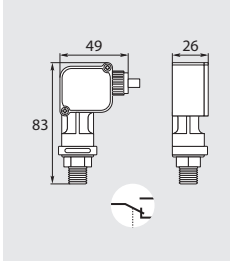


Contact 10 A - 380 V (AC1). Thread 3/8" F.
Max. 250 bar / 90 °C

PR 5



Contact 5 A - 250 V (AC1). Cable 950 mm.
Thread 1/4" M. Max. 250 bar / 90 °C



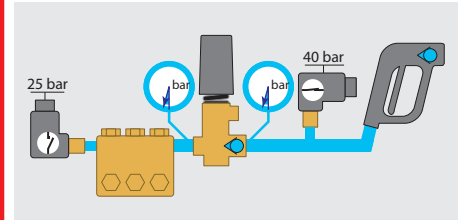
R+M Nr.	TYP	P	I
911 50	FF4-4	0,22 - 4 bar	110 mm
911 40	FF4-32	2 - 32 bar	110 mm
911 20	FF4-250	30 - 250 bar	140 mm

R+M Nr.	Colour	start-up P
912 515	blue	15 bar
912 525	red	25 bar
912 540	black	40 bar

When exchanging the pressure switch please absolutely check the accumulator and if necessary exchange it.

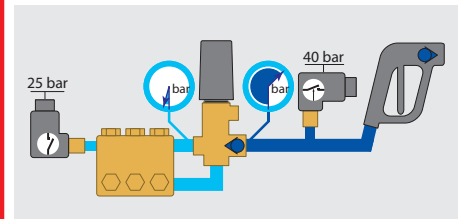
Example of use with 2 pressure switches

1 - Starting Phase



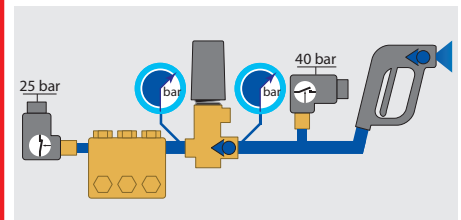
Contact of pressure switch (40 bar) is activated and by this way the cleaner can be started.

2 - High Pressure Phase



Reaching 25 bar the pressure switch (25 bar) changes the operating condition and secures the operation of the cleaner while pressure switch (40 bar) is deactivated.

3 - Stop Phase



During the bypass phase water circulates in the pump without pressure. The pressure switch (25 bar) opens and the cleaner stops. At the same time there is still high pressure between the regulation valve and the gun. The hp cleaner starts again when operating the gun.

Symbols Thread Height Type Pressure Colour