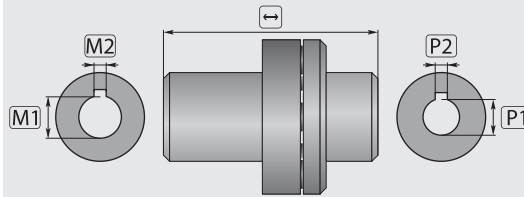


INTERPUMP Pump Drives

Flexible Couplings



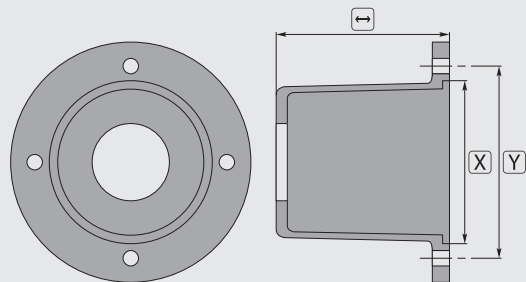
Rubber Pad



R+M Nr.
100 090 47

R+M Nr.	TYP	↔	M1	M2	P1	P2	Pumps
100 017 01	ZG070	93	24	8	24	8	W70 - T521 - T531 - T721 - T731
100 019 11	ZG091	93	28	8	24	8	W71 - W91 - W98 - W99 - WS137 - WS149 - WW141 - WW161
100 151 11	ZG151	105	28	8	24	8	WS82 - WS92 - WS101 - WS102 - WS131 - WS133 - WS151 - WS171 - SW1513 - SW1515
100 015 21	ZG202	114	38	10	24	8	WS152 - WS162 - WS201 - WS202 - HT4715 - HT4718 - HT4721 - HT4723 - SSE1518 - SSE1521 - SSU1518 - SSU1521
100 010 41	ZG104	132	38	10	35	10	WS104 - WS153
100 020 31	ZG203	161	42	12	32	10	WS135 - W163 - W203
100 007 51	ZGWW75	99	24	8	24	8	WW55 MONO/TRIF - WW56 MONO/TRIF - WW74 MONO/TRIF - WW75 MONO/TRIF - WW90 TRIF - WW93 TRIF - WW94 TRIF - WW95 TRIF
100 009 41	ZGWW94	99	28	8	24	8	WW90 MONO - WW93 MONO - WW94 MONO - WW95 MONO - WW1508 - WW1509 - WW1510 - WW1511 - WW1511 - W1507 - W1208 - W1210
100 004 41	ZG044	102	28	8	24	8	EL2007 - EL2009 - EL1411 - EL1413 - EL1510 - EL1513 - EL1707 - EL1708 - EH2009 - EH2011 - EH1413 - EH1416 - EH1708 - EH1713 - EH1711 - EH1713 - UL2009 - UL2011 - UL1413 - UL1415 - UL1509 - UL1512 - UL1708 - UL1710 - UH2008 - UH2011 - UH2013 - UH1708 - UH1710 - UH1712 - UH1713 - HT6311 - HT6313 - HT6315 - SSE1507 - SSE1509 - SSE1411 - SSE1413 - SSU1509 - SSU1511 - SSU1413 - SSU1415 - W97 - W112 - W124 - W130 - W140 - W150 - W154 - W170 - WW116 - WW136 - WW156 - WW18
100 042 51	ZG425	172	55	16	35	10	W425
100 035 51	ZG355	172	60	18	35	10	W158 - W159 - W355
10000661	ZG066	157	42	12	24	8	W2525 - W2030 - W2035 - W3521 - W3523 - W4018 - T2530 - T2040 - HT6628 - HT6639 - HT6646 - SSE1525 - SSE1530 - SSE1535 - SSE1541 - SSU1530 - SSU1535/1540 - SSU1550
10001321	ZG132	121	38	10	24	8	W2030 - Serie 47 - Serie 66

Flanges



R+M Nr.	TYP	↔	X	Y	Engine Flange	Pumps
100 007 00	ZF070	101	95	115	B3 - B14 (90)	W70 - T521 - T531 - T721 - T731 - WW55 MONO/TRIF - WW56 MONO/TRIF - WW74 MONO/TRIF - WW75 MONO/TRIF - WW90 TRIF - WW93 TRIF - WW94 TRIF - WW95 TRIF
100 009 10	ZF091	101	110	130	B3 - B14 (100)	W71 - W91 - W98 - W99 - WS137 - WS149 - WW141 - WW161 - WW90 MONO - WW93 MONO - WW94 MONO - WW95 MONO - WW1508 - WW1509 - WW1510 - WW1511 - WW1511 - W1507 - W1208 - W1210
100 015 10	ZF151	110	110	130	B3 - B14 (100-112)	WS82 - WS92 - WS101 - WS102 - WS131 - WS133 - WS151 - WS171 - SW1513 - SW1515
100 004 40	ZF044	110	110	130	B3 - B14 (100-112)	EL2007 - EL2009 - EL1411 - EL1413 - EL1510 - EL1513 - EL1707 - EL1708 - EH2009 - EH2011 - EH1413 - EH1416 - EH1708 - EH1713 - EH1711 - EH1713 - UL2009 - UL2011 - UL1413 - UL1415 - UL1509 - UL1512 - UL1708 - UL1710 - UH2008 - UH2011 - UH2013 - UH1708 - UH1710 - UH1712 - UH1713 - HT6311 - HT6313 - HT6315 - SSE1507 - SSE1509 - SSE1411 - SSE1413 - SSU1509 - SSU1511 - SSU1413 - SSU1415 - W97 - W112 - W124 - W130 - W140 - W150 - W154 - W170 - WW116 - WW136 - WW156 - WW18
100 013 20	ZF132	127	130	165	B3 - B14 (132)	W2030 - Serie 47 - Serie 66